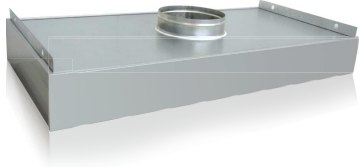
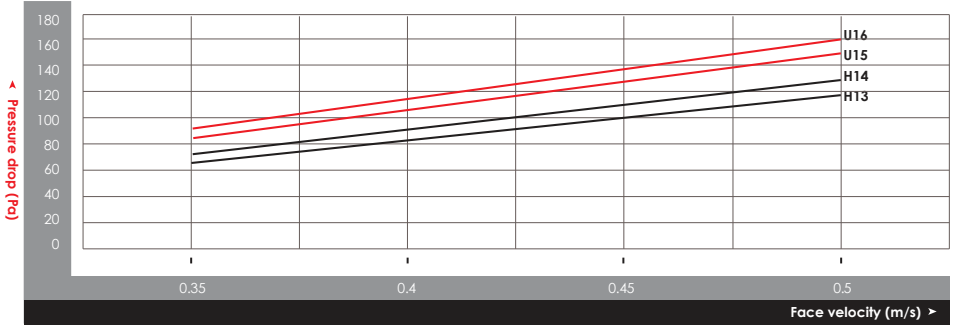


**Disposable High Efficiency
Ceiling Module**

M-Cam



Graph of Initial Pressure Drop versus Face Velocity



Applications



Semiconductor



Micro-electronic



**Pharmaceutical
& Laboratories**



General



**Food Processing
Industry**

Product Features

Operating Conditions

Continuous operating temperature: Max. 80°C
Operating relative humidity: ≤100 (%RH)



Frame

Material: Anodised aluminium
Thickness: 150mm
Top plate: Galvanised steel / epoxy powder coated SPCC
Gasket: EPDM / neoprene
Collar diameter: 250mm, 300mm, 350mm
Collar thickness: 70mm



Media

Material: Ultrafine fiberglass



Filter Efficiency (EN1822:2009)

H13, H14, U15, U16



Faceguard

Material: Epoxy powder coated steel
Diffuser plate: Galvanised steel



Optional Accessories

Thermal insulator: PE black insulation cotton



Product Specifications

Dimension (mm)	Air Flow (m³/h)	Initial Pressure Drop at 0.45 m/s (Pa)			
		H13	H14	U15	U16
WxHxD					
610x1220x150	1116	100	110	125	140
610x1210x150	1110	100	110	125	140
570x1170x150	996	100	110	125	140
610x610x150	546	100	110	125	140
600x600x150	528	100	110	125	140
570x570x150	474	100	110	125	140

Remarks: 1. Available in three air inlet collar diameters, 14"φ(350mm), 12"φ(300mm) and 10"φ(250mm).
2. Height of the product included air inlet is 220mm.
3. Recommended final pressure drop is 300Pa.